

ALVARADO

CPST-TX

Clear Passage Tandem Maximum Security Turnstile



Technical Specifications

Dimensions	<u>Unit Height:</u>	91" (2311 mm)
	<u>Unit Width:</u>	94.5" (2400 mm)
	<u>Unit Depth:</u>	54.125" (1375 mm)
Materials	<u>Yokes:</u> (Curved Sections)	Two piece assembly consisting of 3/16" thick polycarbonate panel contained within an extruded aluminum frame. Each frame consists of two 1 3/4" wide vertical pieces and two 3 3/8" wide horizontal pieces bent to a centerline radius of 29 3/8". The polycarbonate panel section also has a centerline radius of 29 3/8" and is securely contained within the inside perimeter of the frame. Available in #4 satin or powder coated finish. There are two yokes for each tandem turnstile.
	<u>Yoke Guard Plates:</u>	Cold rolled steel (or #304 stainless steel). 16-gauge sheet bolted to the top of the channel / yoke assemblies. There are two yoke guard plates for each tandem turnstile.
	<u>Rotos:</u> (Rotating Sections)	Formed and welded cold rolled steel (or #304 stainless steel). Comprised of three arm sections positioned 120 degrees apart from one another. There are two rotos for each tandem turnstile. Each arm section of the "standard" roto contains 11 arms for a total of 33 arms per roto. Each arm section of the "tandem" roto contains 10 arms for a total of 30 arms per roto. Each arm is constructed from 1" x 3" clear clear Lexgard®MP 1000 laminate with a Margard® surface, glued and press fit into a steel "boot" which is welded to a vertical 3" OD x 3/16" wall tube. All exterior welds are ground smooth and polished. Available in #4 satin or powder coated finish. There are two rotos for each tandem turnstile.
	<u>OV:</u> (Barrier Section)	Formed and welded cold rolled steel (or #304 stainless steel). Consists of 21 each 1" x 3" 16-gauge tubing arms bent to an inside radius of 28-3/4" and 2 each 2-1/4" OD x 11-gauge vertical tubes. No external fasteners are used in the construction of the OV. All exterior welds are ground smooth and polished. Available in #4 satin or powder coated finish.
	<u>Top Channel:</u>	Formed and welded 304 stainless steel. The "U" channel is composed of 7" wide 10-gauge steel with a 16-gauge cover. All exterior welds are ground smooth and polished. Available in #4 satin or powder coated finish.

All tubing and sheet metal materials meet ASTM Standard A513.

Function The CPST-TX is an electric lock controlled, full height, tandem turnstile designed to provide controlled access into and out of high security facilities in locations where two turnstiles are required, but space for two separate units is not available.

Available Configurations The CPST-TX is designed to interface with virtually any access control system or reader to provide the electric locking control required in controlled access facilities. The following configurations of the CPST-TX are available:

CPST-T-3 Using key lock control, each turnstile can be configured to provide free passage in both directions; free passage in one direction and restricted passage (locked) in the opposite direction; or restricted passage (locked) in both directions.

CPST-TX-4X	Each turnstile has electric lock control in one direction, no passage in the opposite direction.
CPST-TX-5X	Each turnstile has electric lock control in one direction, free passage in the opposite direction. This model includes self-centering roto operation.
CPST-TX-6X	Each turnstile has separate electric lock controls in both directions.

Control Mechanism Components

<u>Cam and Shaft Assemblies</u>	The lobed cam of each unit is a precision investment cast stainless steel welded to a splined shaft. The splined shaft fits into a reciprocal splined coupling in the top of each roto, creating a solid non-slip connection between the parts. There are two cam and shaft assemblies for each tandem turnstile, one for the "standard" roto and one for the "tandem" roto. A "standard" cam and shaft assembly is not interchangeable with a "tandem" cam and shaft assembly.
<u>Top Bearing Assemblies</u>	Each cam and shaft assembly rotates in a bearing assembly consisting of two fully protected precision bearings.
<u>Friction Brake Assemblies</u>	The braking mechanism consists of a precision investment cast steel circular disc brake that rotates and maintains contact with two disc brake pads to provide friction braking during the rotation of the turnstile. The friction braking tension is adjustable. There are two friction brake assemblies for each tandem turnstile.
<u>Mechanical Turnstile Control</u>	The locking and unlocking of the unit is controlled with stainless steel lock arms that are moved into the appropriate locked or unlocked position by continuous duty rated solenoids and spring assemblies. There are two lock arms per roto, one solenoid and spring assembly per lock arm, and one lock arm per direction, allowing for independent control of each rotational direction.
<u>Opto Interrupter Rotation Wheel Assemblies</u>	This assembly consists of two opto interrupters (small, industrial grade, transmit and receive LEDs), and a rotation wheel. As the turnstile arm is rotated, the rotation wheel passes between the two opto interrupters, signaling the Alvarado Turnstile Controller (ATC) that a turnstile rotation has occurred. The ATC uses this information to re-lock and provide access control functionality without the need for mechanical microswitches. There are two opto interrupter rotation wheel assemblies and two ATCs for each tandem turnstile.

Electrical Components and Functionality

The following are the electrical requirements and standard functionality of the CPST-TX:

Power Supply	110 VAC, 60 Hz Low voltage primary power of 10 VAC or 12 VDC may also be supplied by connecting power directly to each ATC.
Power Rating	Maximum power consumption is 150 W per turnstile.
Operational Voltage	Primary power is stepped down and rectified for low voltage 12 VDC operation.
On/Off Switch	An on/off switch is located on each power junction box inside the CPST-TX top channel. Two power junction boxes are provided for each electrically controlled turnstile. A visible green LED is illuminated on the ATCs when the power is "on".
Power Receptacles	The power junction box inside the CPST-TX top channel includes two 110 VAC power receptacles providing a convenient way for installers or technicians to power tools or equipment they may need as they test or maintain the CPST-TX in the field.
Surge Protection	Each ATC has line to line surge protection for single-phase low voltage AC input to 125 amps. Each ATC also contains a varister that switches to a high impedance state to protect the circuit in the event of a power surge.

Bi-directional Solenoid Drivers	Each ATC provides one solenoid driver per rotation direction.
Activation	Activation for each direction of operation is achieved by supplying a momentary dry contact of any duration to the ATC. A terminal strip connection is provided on each ATC for this purpose.
Timed Delay Auto Re-Lock	An activation signal unlocks the turnstile for one entry. Once the turnstile is unlocked, the user is allowed a maximum of 20 seconds to pass through the turnstile. If the turnstile arms are not rotated within the 20-second time frame allowed, the turnstile automatically relocks.
Field Activation Testing	Each ATC provides a field activation testing button, for each electrically controlled direction. This feature provides a simple way for installers to test the functionality of the CPST-TX and isolate problems in the field.
Remote Unlocking	Each ATC accepts inputs from a continuous dry contact emitting device to bypass the access control system and allow the CPST-TX to be remotely unlocked or "opened" in the electrically controlled direction(s). A terminal strip connection is provided on the ATC for this purpose.

Outputs	Terminal strip connections are provided for the following output signals:
Feedback / Turnstile Rotation Count	Each ATC provides a double pole, single throw, relay in each direction of operation. This allows the ATC to provide a "feedback" signal in the form of a relay output to the access control provider or an external counting system. A terminal strip connection is provided on the ATC for this purpose.

Available Finishes	<p>Powder Coated Available in a wide variety of colors. Sub-assemblies are sand blasted to prepare for the powder coating finish. The powder is electrostatically applied, then baked to assure proper curing and adhesion.</p> <p>Stainless Steel All external fabricated materials are composed of #304 stainless steel (noted in the descriptions above as #304 SS) and polished to a #4 satin finish.</p>
---------------------------	---

Shipping Details CPST-TX turnstiles are shipped in ten main sections: the Top Channel, the Yoke sections (shipped as 4 half yokes), the Rotos (2), the OV, and the Yoke Guard Plates (2). Each section is fully fabricated as a sub-assembly for easy installation. Each CPST-TX unit includes mounting hardware (anchors, bolts, washers, etc.) to mount the unit to a standard concrete pad. Alvarado ships products throughout the world.

Installation Details All CPST-TX units must be installed on a firm foundation in a manner that allows the required power and activation signal cabling to be pulled into the top channel. The recommended platform is 102" by 72" by 4" deep, level concrete. No embedded fasteners are needed for installation. Installation should be performed by a skilled installer following the manufacturer's directions and instructions (supplied with the turnstile).

Approximate Weight Approximately 1,600 lb. (726 Kg) per turnstile.

Options

Failsafe Operation

The electrically controlled direction(s) will unlock upon power loss and provide free passage. The CPST-TX unit is supplied in a fail-lock mode as standard. If power is interrupted to a standard fail-lock CPST-TX, it will remain locked in the electrically controlled direction(s). Failsafe operation can be specified for one or both electrically controlled directions on one or both rotos.

Card Reader Mounting Plate

One or more mounting plate(s) can be provided to allow the access control reader and/or key pad to be mounted on the yoke(s) of the CPST-TX turnstile if desired.

Push Button Assembly

This option allows the user to unlock the turnstile for one passage with a stainless steel push button assembly. This option is most commonly used in the exit directions of Model CPST-TX-6X units.

Key Overrides

A key override allows the operating technician to override the access control system and unlock any direction of travel through the CPST-TX turnstile. Key overrides may be either mechanical or electrical (depending on the operation of the turnstile). Separate key overrides are required for each direction of travel and are located on the underside of the top channel. When multiple directions have key overrides, the locks are keyed alike.

Adjustable Timed Delay Auto Re-Lock

This option allows the operating technician to adjust the duration of the time allowed for the user to pass through the turnstile in each controlled direction. If the turnstile arm is not rotated within the time frame set, the turnstile will automatically re-lock. This option also allows the operating technician to disable the timed delay auto re-lock feature if desired. Adjustments to the timed delay auto re-lock feature can be made in one or both directions for each roto of CPST-TX units configured to provide bi-directional electric lock control.

Red/Green Card Status Lights

Red and Green LEDs are available for use with the CPST-TX unit. The red and green LEDs are configured to function in the following manner:

- An illuminated red light indicates the turnstile is locked and ready for card presentation. The red light will remain illuminated if an “unauthorized” card is presented.
- An illuminated green light indicates that the access system has provided the ATC with an activation indicating that an “authorized” card has been presented. When the green light illuminates, the turnstile will unlock.

Red/Green/Yellow Card Status Lights

Red, Green, and Yellow LEDs are available for use with the CPST-TX unit. The red, green, and yellow LEDs are configured to function in the following manner:

- An illuminated yellow light indicates the turnstile is locked and ready for card presentation.
- An illuminated green light indicates that the access system has provided the ATC with an activation indicating that an “authorized” card has been presented. When the green light illuminates, the turnstile will unlock.
- An illuminated red light indicates that the access system has provided the ATC with an activation indicating that an “unauthorized” card has been presented. The turnstile will remain locked. To accommodate this feature an additional terminal strip connection is provided on the ATC for each controlled direction.

Remote Locking

The ATC accepts inputs from a continuous dry contact emitting device to bypass the access control system and allow the CPST-TX to be remotely locked or “closed” in the electrically controlled direction(s).

Turnstile Open/Closed Lights

Large Red and Green lights are also available to indicate whether the CPST-TX turnstile is open or closed. This option is used in conjunction with the remote locking and unlocking option.

Self-Centering Mechanism

The self-centering mechanism corrects under (less than 120°) or over (more than 120°) rotation of the turnstile arms following completion of a passage cycle. The turnstile arms automatically return to the “home” position (with one set of arms pointing directly at the center of the yoke) when this option is installed. This feature is standard on the CPST-TX-5X.

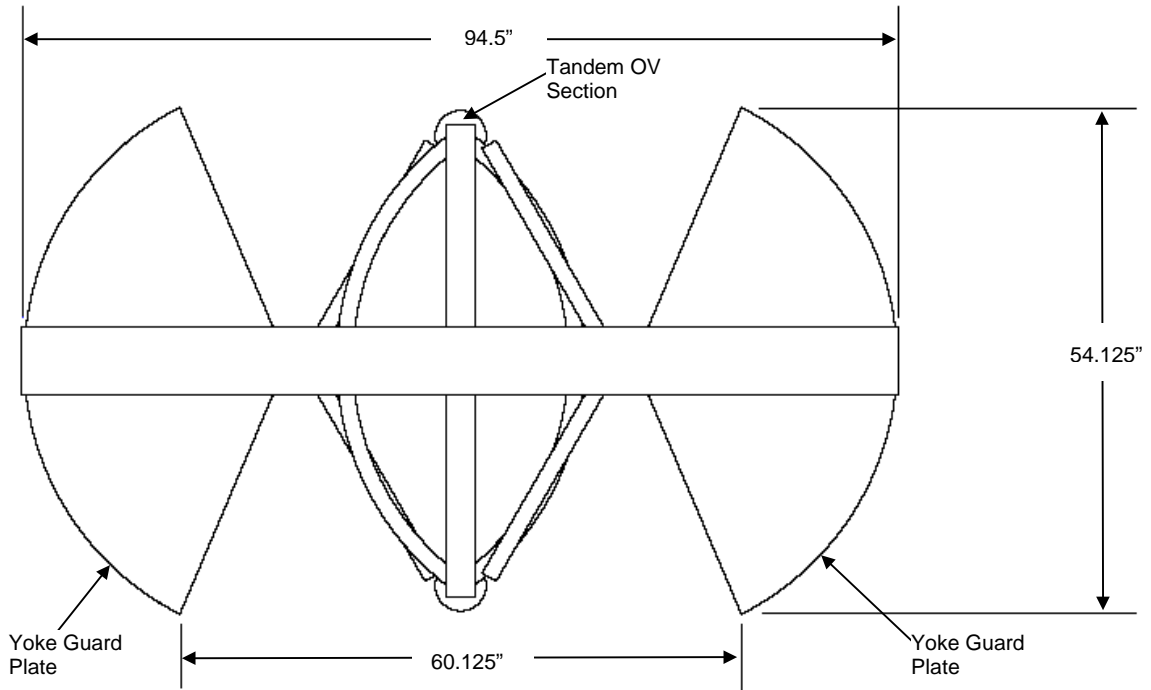
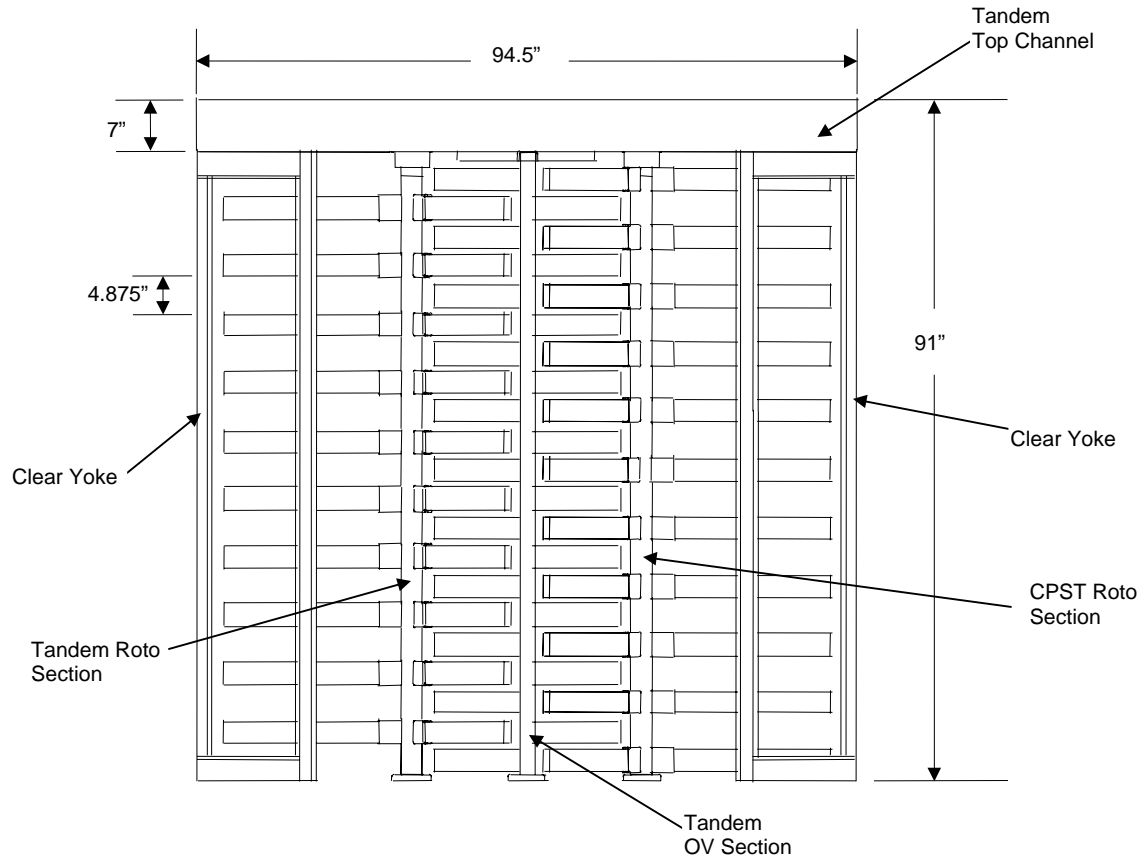
Battery Backup

Two trickle charge battery systems are installed in the top channel to provide turnstile operation if primary power is lost.

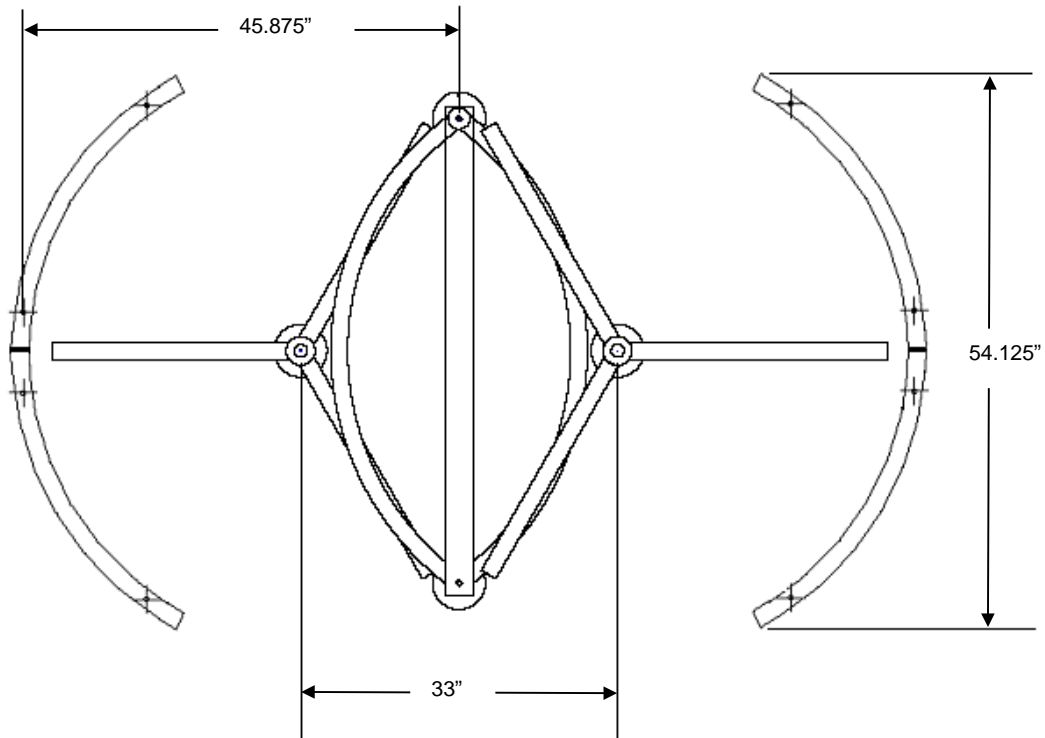
Computerized Counting

Each turnstile rotation outputs a count to GateWatch, Alvarado's Windows based software program that monitors and records real time patron counts. Counts can be transmitted from the turnstile in several ways, including over a standard, in facility, Ethernet network or using wireless RF devices.

CPST-TX Site Preparation

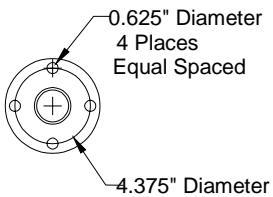


CPST-TX Footprint Drawing



Anchor Pattern

ROTO AND OV BASE



Slab Requirements

- Minimum 102" by 72" by 4" deep, level solid concrete pad

Warranty

Alvarado Manufacturing Co., Inc. warrants the CPST-TX, from defects in material or workmanship, for the period of ONE YEAR from date of shipment. Complete details of the warranty are available from Alvarado by request.

Technical Services

Technical information is available from Alvarado Manufacturing Co., Inc., and its representatives, distributors, and dealers.

ALVARADO

Alvarado Manufacturing Company, Inc.
12660 Colony Street
Chino, CA 91710

Telephone (909) 591-8431
Toll Free (800) 423-4143
Fax (909) 628-1403

www.alvaradomfg.com