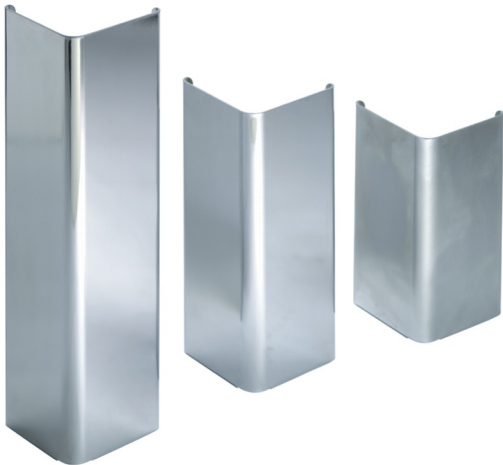


CPI

Case Protectors

With an attractive, traditional chrome finish, the CPI guards against damage from carts and equipment.



Constructed from 12-gauge, heavy duty chrome plated steel, the CPI is installed using four 4 anchors. (Rated at 4,500 lbs. Pullout capacity). Standard heights are 12, 16 and 24 inches. This case protector comes with inside anchors tabs. The CPI is also available in satin finish stainless steel.

- Attractive corner design with excellent cart deflecting abilities
- Designed to absorb heavy impacts
- Comes standard with inside anchor tabs
- Available in durable chrome plated steel or satin finish stainless steel

ALVARADO