

# Large Stadium Facilities

Home of baseball's Cleveland Indians, Jacobs Field was the first large stadium facility in the U.S. to implement a true computerized patron entry control system. Alvarado's GateLink™ software and 50 scanning EDC turnstiles provide admission control for the facility. Indians fans gain access to the park by scanning bar coded tickets. The turnstile integrates a bar code scanner, back lit message display and signal indicator lights.

Alvarado is a leader in stadium and facility entry control. In addition to Jacobs Field, we have installed custom turnstiles integrating a variety of bar code scanners, lights, batteries and displays at other high profile facilities including Pittsburgh's PNC Park, Denver's Invesco Field, and our most recent installation, Bank One Ballpark in Phoenix.

Alvarado completed the project at Bank One Ballpark in record time, replacing all existing turnstiles during the 2002 All-Star break. The new Alvarado turnstiles feature a built-in TFT color display that prompts fans to scan their bar coded single game and season tickets. The system was integrated with the Arizona Diamondbacks' in-house ticketing system.

# ALVARADO



In 1997, Six Flags chose Alvarado to design and manufacture access control hardware at all of their theme parks, including Magic Mountain, Six Flags Over Texas, and Six Flags Mid America.

After product meetings with Six Flags, their consultants, and Alvarado's design staff, Alvarado created a specialized unit called a Patron Access Console (PAC). Designed with integrated keypad, omni-directional scanner, controller, counters and associated electronics, the PAC serves as the hardware backbone of Six Flags' entry control system. The PAC units were combined with Alvarado's GateLink and GateWatch software, EDCX turnstiles and Supervisor 500 barrier-free optical turnstiles to provide a complete access control solution.

In addition to designing the hardware and software, Alvarado coordinated the installation of the system at the Six Flags parks.



During the installation phase of the project, Six Flags also asked Alvarado to design a vehicle counting system.

Using Alvarado controllers, loop detectors and GateWatch software, the system provides revenue control for Six Flags' parking point-of-sale system.

To ensure that operators were not simply pocketing a percentage of the parking admissions, we created an interface to the parking POS system that compares vehicle counts with revenue receipts from each station.

# ALVARADO



# Cruise Ships

In 1998, Alvarado undertook a multi-million dollar project to develop and implement a new Security Screening ID System for Holland America's entire fleet of cruise ships. Using the latest in bar code, magnetic stripe and video capture technology, Alvarado's SSI system is a complete electronic access control solution that addresses the demanding operational and regulatory needs of cruise vessels.

The system combines powerful software along with advanced hardware, including special versions of our Supervisor Access Control Lanes.

The Alvarado SSI system is currently used by Holland America to facilitate passenger check-in at ports of call and remote locations, and to track all passenger, crew and visitor movement on and off each ship. This allows creation of all manifest documents required by SOLAS Regulation 24/02.

The system's features include the ability to check in passengers with laptop computers communicating via wireless computer network, and the printing of unique barcoded ID cards for all passengers.

When entering or exiting any Holland America ship, passengers and crew scan their ID cards at an access control lane for validation. The lanes are portable, allowing use at different gangways, depending on the port.

Alvarado designed and built all access control hardware and provided all of the radio frequency systems integration for the Holland America project. The software components of the SSI system include our GateLink and GCard™ programs, which handle all access control, video capture and card printing.

The entire system was installed under an aggressive schedule encompassing 11 ships over a period of approximately four months.

# ALVARADO



# Custom Facilities Projects



In conjunction with one of our sheet metal vendors, Alvarado provided custom turnstiles for installation at the **NSA**.

# ALVARADO



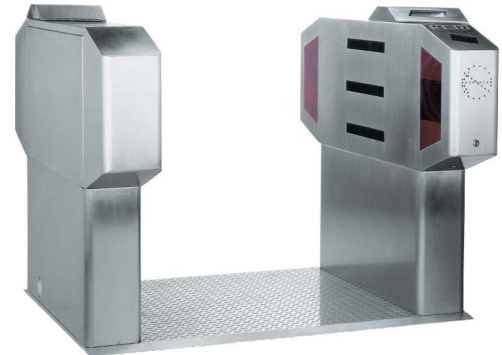
At **Universal Studios Japan**, Alvarado designed and installed a custom ride loading system consisting of SU500 optical counting turnstiles, EDC turnstiles, GWCB controllers, custom control panels and GateWatch software.

The turnstiles and optical turnstiles count patrons entering ride "bullpen" areas. Counts are output to local displays, to our GateWatch real-time counting software, and through a system interface, to the USJ system software provider, Fujitsu. This captured data allows Universal to determine actual ride usage throughout the day. Historical data is utilized for labor scheduling and to schedule promotional activities to increase ridership during slow periods. the USJ system is based on a similar Alvarado system installed at Universal Studios Islands of Adventure theme park in Florida.

Alvarado designed and manufactured all hardware including control panels. All product was required to be built to exact Japanese specifications.



Alvarado produced custom optical turnstiles for testing at **Bay Area Rapid Transit Facilities**. The turnstile Alvarado designed included optical access control, control sounds and lights, end control and flashing strobe unauthorized entry lights.



Alvarado installed an ungated parking count system at the largest parking garage in North America for **Disney**. The system includes PC server based software written to Disney's specifications as well as controllers, loops, loop detectors and communication and electrical wiring. Alvarado coordinated the entire project, provided complete shop and layout drawings, and provided the physical installation of the entire system.

**Windstar** Alvarado has implemented its SSI system on **Windstar Cruise Ships**, which utilizes the system along with Alvarado's newly designed bi-directional scanning pedestals, allowing passengers to scan ID cards while entering or exiting the ships.

